



MONTHLY MEMBERSHIP PROGRESS REPORT

District 23 C

Results as of: 4/30/2015

GMT: ED LECIUS

LOCATION CONNECTICUT

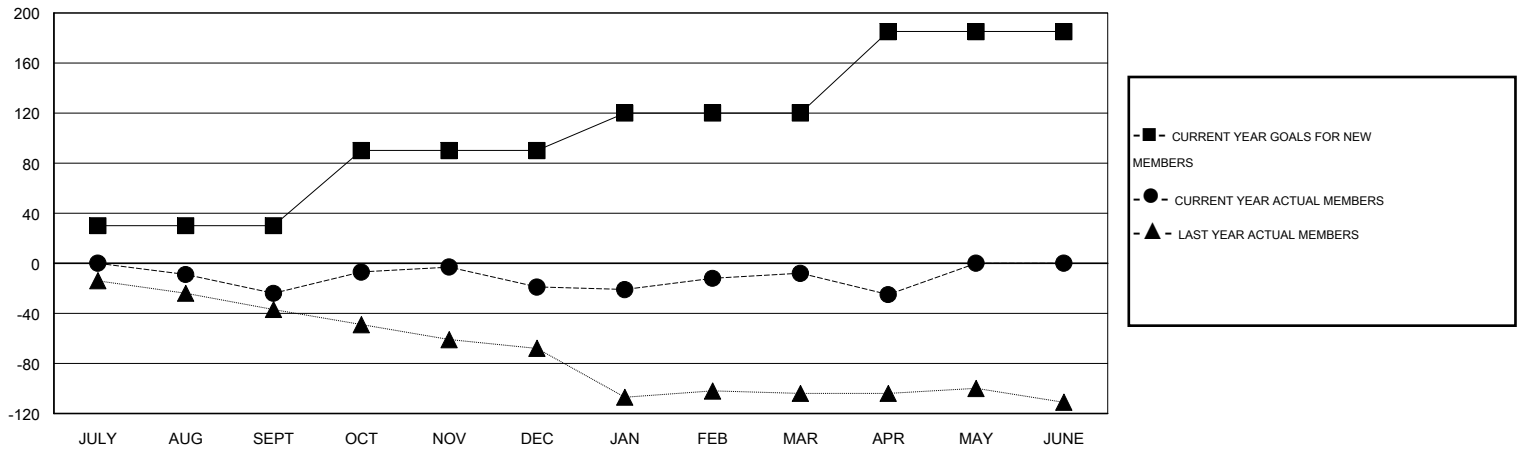
GMT CA 1

Clubs					Members				
RESULTS FOR 2014-2015					RESULTS FOR 2014-2015				
QUARTER	NEW CLUB GOAL	NEW CLUBS	DROPPED CLUBS	NET GAIN/LOSS	QUARTER	NEW MEMBER GOAL	CHARTER AND NEW MEMBERS ADDED	DROPPED MEMBERS	NET GAIN/LOSS
JULY/AUG/SEPT	0	0	0	0	JULY/AUG/SEPT	30	24	48	-24
OCT/NOV/DEC	1	0	1	-1	OCT/NOV/DEC	60	61	56	5
JAN/FEB/MAR	0	0	0	0	JAN/FEB/MAR	30	38	27	11
APR/MAY/JUNE	1	0	0	0	APR/MAY/JUNE	65	9	26	-17

GOALS AND ACTUAL NEW CLUBS CUMULATIVE



GOALS AND ACTUAL MEMBERS CUMULATIVE



DROPPED CLUBS: 1	36 CLUBS OF 53 ADDED 1 OR MORE NEW MEMBERS	GENDER DISTRIBUTION
		MALE 1,167 (66.19%)
		FEMALE 596 (33.81%)
DROPPED MEMBERS	CLICK HERE FOR HEALTH ASSESSMENT DATA	FAMILY UNIT MEMBERS 326
DECEASED 21		HEAD OF HOUSEHOLD 158
CLUB CANCELLED 0		NON-HEAD OF HOUSEHOLD 168
OTHER 136		
TOTAL 157		